

Grasso FKS RRL / S

Specifications

Brand	Grasso
Type	FKS RRL / S
Product type	Water Cooled Chiller
Capacity kW	558,0
Capacity Tons	158,7
Refrigerant	NH 3 (ammonia)
Weight in kg.	9000
Sizes	4350x2350x3000 mm (LxWxH)
Compressor(s) type & model	Grasso L-1
Display	Stahl MT-60
Remarks	*Capacity based on the following temperatures: +4°C/+40°C (evaporating/condensing) and a cold water temperature of 6/12°C.
Stock	1



Description

Used Grasso FKS RRL / S

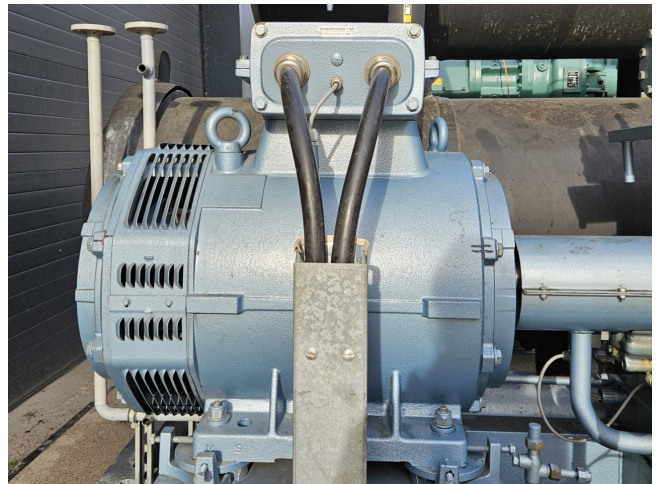
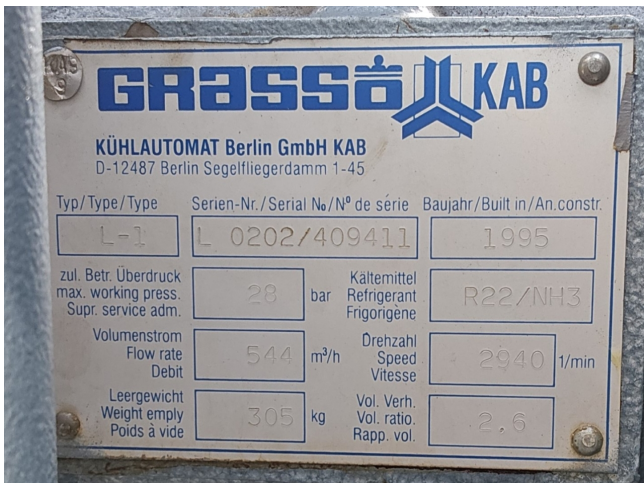
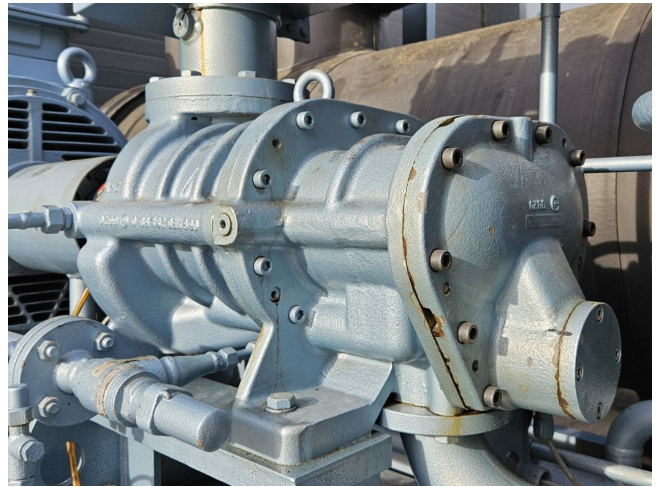
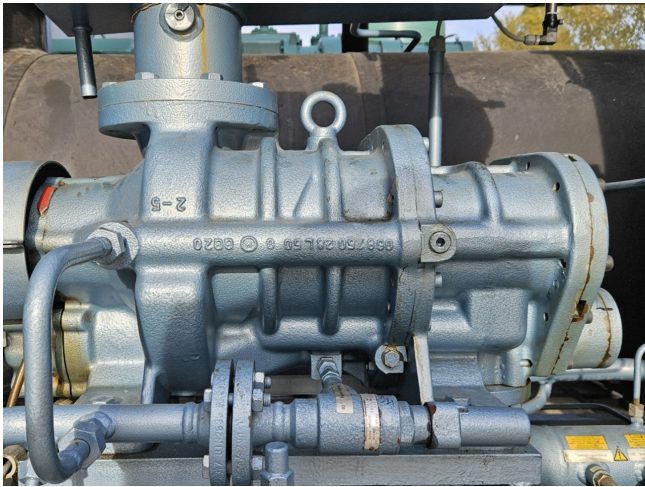
Used Grasso FKS RRL / S water cooled chiller on NH3 (Ammonia). Complete with a Grasso L-1 screw compressor with an AEG KN7280M-AB01B-Z electric motor - 50/60 Hz - 132/152 kW - 2965/3565 RPM, Hans Güntner AV85.40-10 shell and tube evaporator, Hans Güntner AK45.40-4 shell and tube condenser, Grasso 64654 oil separator with a volume of 300 liter, oil cooler, oil pump, Grasso 65253 vent valve, Witt HR 3 H float and a control panel with a Stahl MT-60 display. Capacity based on the following temperatures: +4°C/+40°C (evaporating/condensing) and a cold water temperature of 6/12°C.

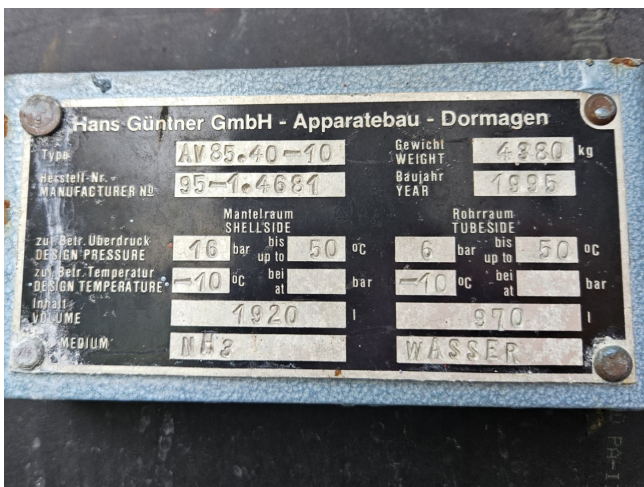
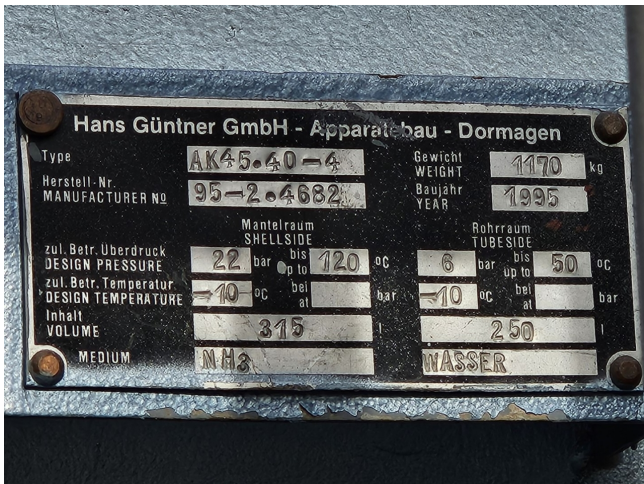
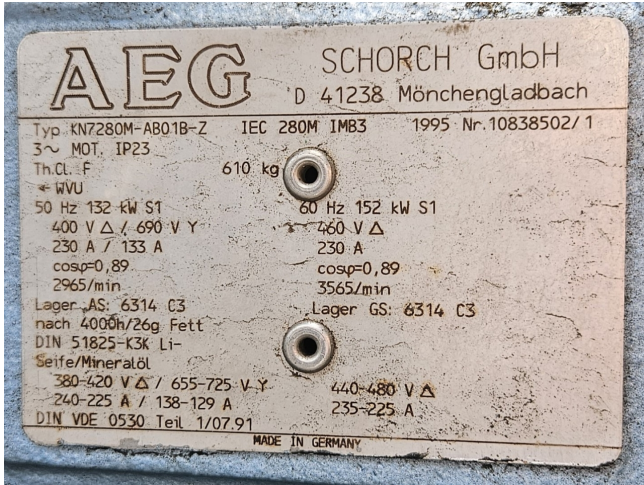
*All components of this chiller will be tested on good working, leak free condition (condensing blocks),

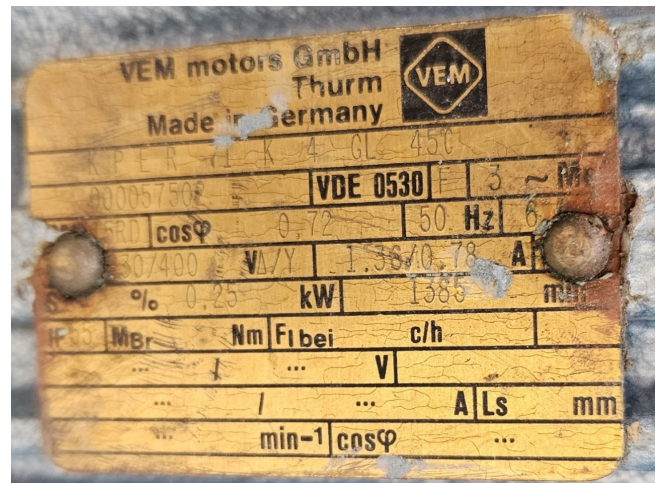
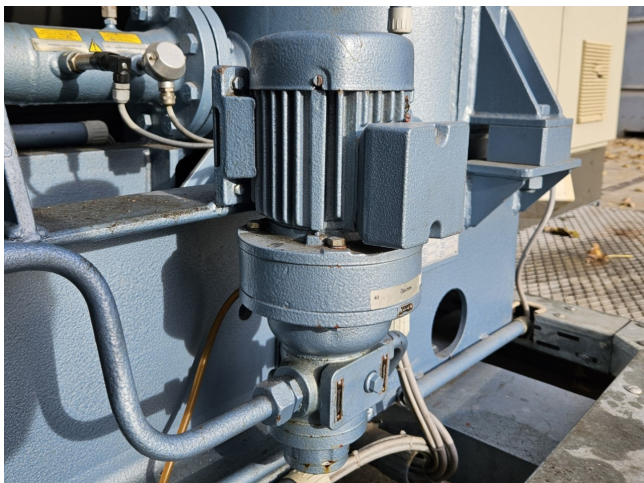
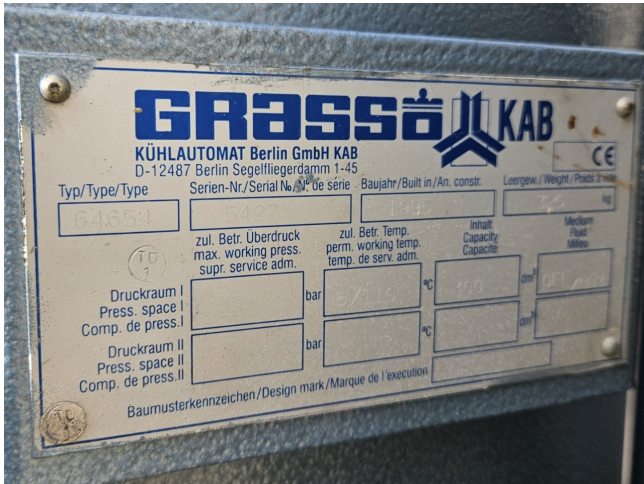


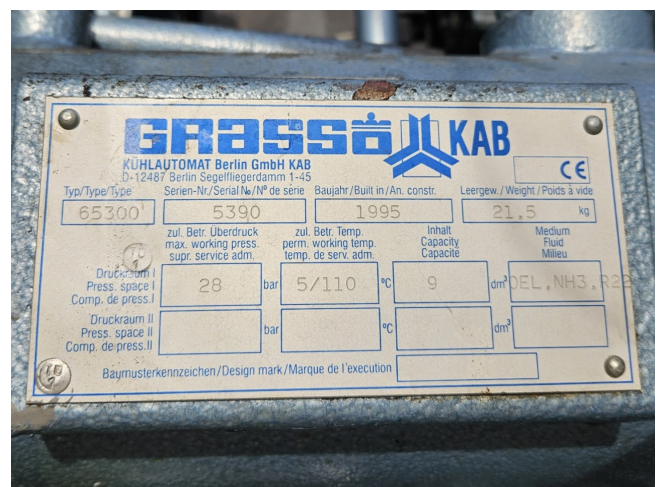
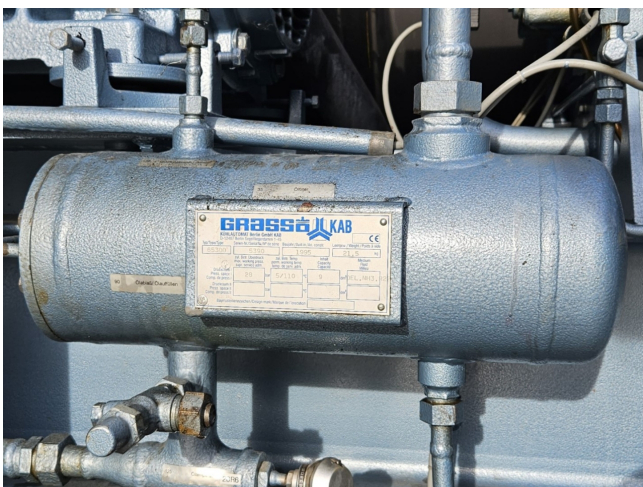
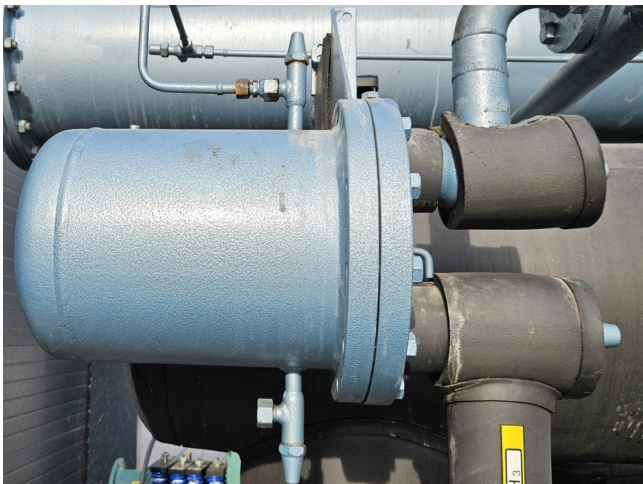
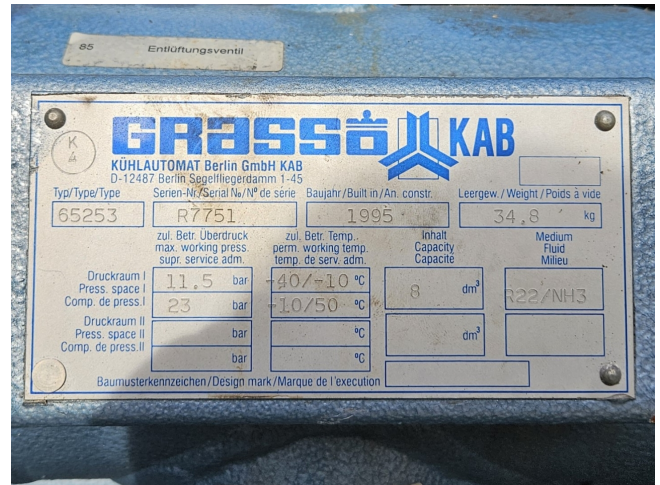
compressors, fans, control panel, etcetera). Choosing HOSBV means buying with warranty. We perform a industrial cleaning and rust spots will be covered. Also, we can arrange your shipment.

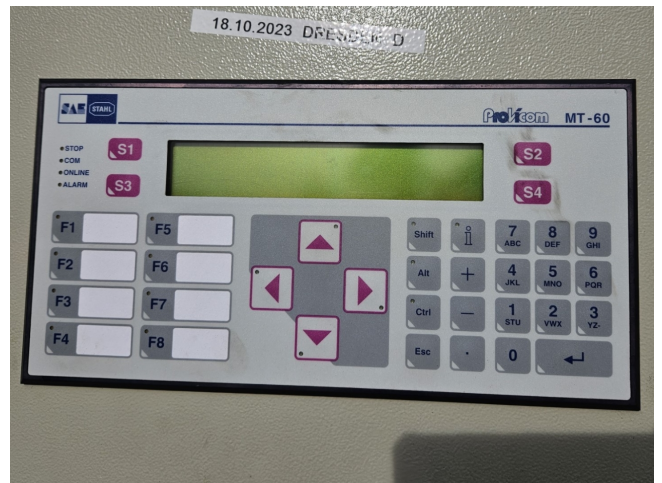














Refrigerant : R134a			
Capacity (Specified : 1000kW)	kW	1000,0	96,28 %
Input power (Motor margin : 26,0%)	kW	157,9	Max : 198,9
Shaft power	kW	148,2	2965rpm
COP		6,33	
FLA	A	257,1	LRA : 2201,0
Inrush current	A	990,5	

Condensing temperature	°C	Evap.	Cond.
Evaporating temperature	°C	5,02	33,62

Inlet temperature	°C	Water	Water
Outlet temperature	°C	12,00	27,00
Volume flow rate	l/s	6,00	32,00
Velocity	m/s	39,7	55,4
Fouling factor	K.m ² /W	1,17	2,29
Pressure (gas)	kPa	0,000018	0,00005
Freezing temperature	°C	35,0	75,0
Pass count		0,0	
Tube N°		2	2
Tube type		181	260
Tube material		TurboBII	TurboCSL
Tube thickness	in	CU	CU
		0,025	0,025

% Load	Capacity (kW)	ECWT (°C)	COP
100	1000,0	27,0	6,3
75	750,0	22,7	7,2
50	499,9	18,3	7,2
25	250,0	18,3	6,8